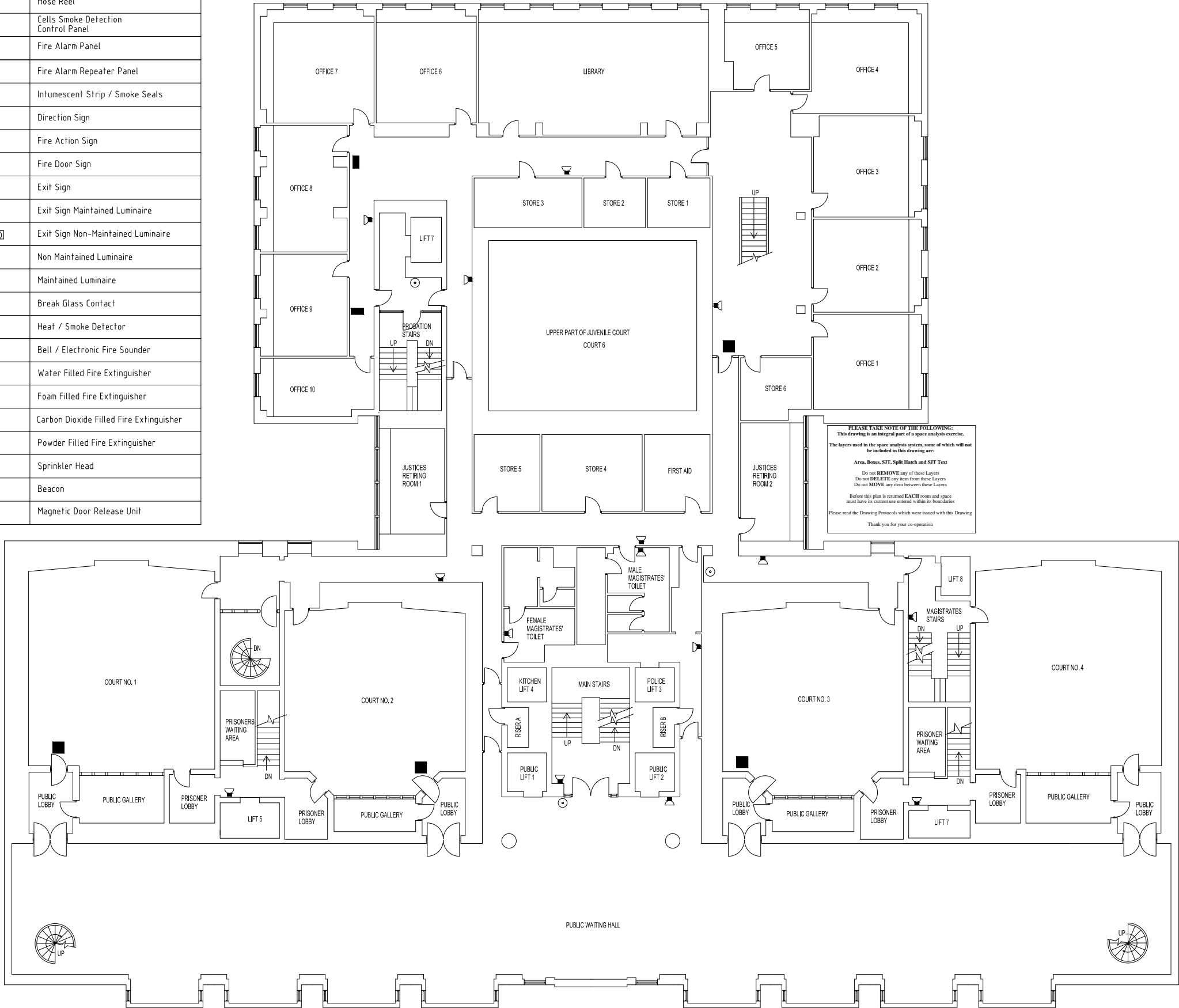


| EXISTING ELEMENTS | |
|-------------------|---|
| [FB] | Fire Blanket |
| [VP] | Vision Panel |
| [DC] | Door Closer |
| [HR] | Hose Reel |
| [CSD] | Cells Smoke Detection Control Panel |
| [FAP] | Fire Alarm Panel |
| [FARP] | Fire Alarm Repeater Panel |
| [IS] | Intumescent Strip / Smoke Seals |
| [DS] | Direction Sign |
| [FAS] | Fire Action Sign |
| [FDS] | Fire Door Sign |
| [Ex] | Exit Sign |
| [Ex(M)] | Exit Sign Maintained Luminaire |
| [Ex(NM)] | Exit Sign Non-Maintained Luminaire |
| [NM] | Non Maintained Luminaire |
| [M] | Maintained Luminaire |
| ○ | Break Glass Contact |
| ● | Heat / Smoke Detector |
| 🔔 | Bell / Electronic Fire Sounder |
| 🧯 | Water Filled Fire Extinguisher |
| 🧯 | Foam Filled Fire Extinguisher |
| 🧯 | Carbon Dioxide Filled Fire Extinguisher |
| 🧯 | Powder Filled Fire Extinguisher |
| 🔥 | Sprinkler Head |
| 🔔 | Beacon |
| 🚪 | Magnetic Door Release Unit |



SECOND FLOOR

NOTES

1. DO NOT SCALE DIMENSIONS OFF THIS DRAWING

2. THE POSITIONS OF EQUIPMENT SHOWN ON THIS DRAWING ARE INDICATIVE OF THEIR APPROXIMATE POSITION ON SITE. THIS DRAWING SHOULD BE USED FOR GUIDANCE PURPOSES ONLY.

3. FDS x 2 INDICATES A FIRE DOOR SIGN ON EACH FACE OF THE DOOR.

4. ILMCS AREAS

Compartment 1

Compartment 2

Compartment 3

Compartment 4

Compartment 5

Probation Area

Stairwell

Cells

Gaolers

Photoluminescent proposed direction signs

Photoluminescent proposed exit signs

Proposed Menvier non maintained luminaire with direction legend or exit legend

Proposed Fluorel non maintained luminaire with direction legend or exit legend

Proposed FD30's single leaf

Proposed FD30's double leaf

AQUMEN

The Facilities People

ROUGHTON

Victoria Station House, 191 Victoria Street, London, SW1E 5NE
Tel: 020 7932 2800 Fax: 020 7630 8471 E-mail: london@roughton.co.uk

PROJECT

INNER LONDON
MAGISTRATES COURT

PROJECT LOCATION

CAMBERWELL
MAGISTRATES COURT

DRAWING TITLE

SECOND FLOOR EXISTING/
PROPOSED NEW WORKS FIRE PROTECTION
SCHEDULE

| | | | |
|--------------------|-----------|----------|-----------|
| PROJECT No | SL5018 | SCALE | N.T.S |
| APPROVED | P.M | SURVEYED | O.K |
| DATE | SEPTEMBER | DRAWN | A.D./R.W. |
| BUILDING SURVEYING | | | |

| | |
|------------|----------|
| DRAWING No | REVISION |
| CA(E)3104 | |

P:\ACAD12\SL5018\SHEETS\CAMBERWELL\CA(E)3104.DWG